

LEGEND

- Project Completed
- Project Under Construction
- Project Authorized
- Project Proposed
- XII Salt Studies

The 17 locks in the Arkansas-Verdigris navigation system will provide a lift of 420 feet. The barge channel will have a minimum depth of 9 feet with 12 feet at the lock sills. The Arkansas River channel will have a minimum width at the bottom of 250 feet. Under the initial development plan, the bottom of the Verdigris channel will be 150 feet wide except at the upper end where it will be 300 feet wide. Provision is being made to widen all of the Verdigris channel to a minimum bottom width of 300 feet when traffic makes enlargement of the waterway necessary. All locks are 110 feet wide and 600 feet long. All bridges will be raised to provide a minimum vertical clearance of 52 feet 98 per cent of the time.

Scale of Miles

10 0 10 20 30

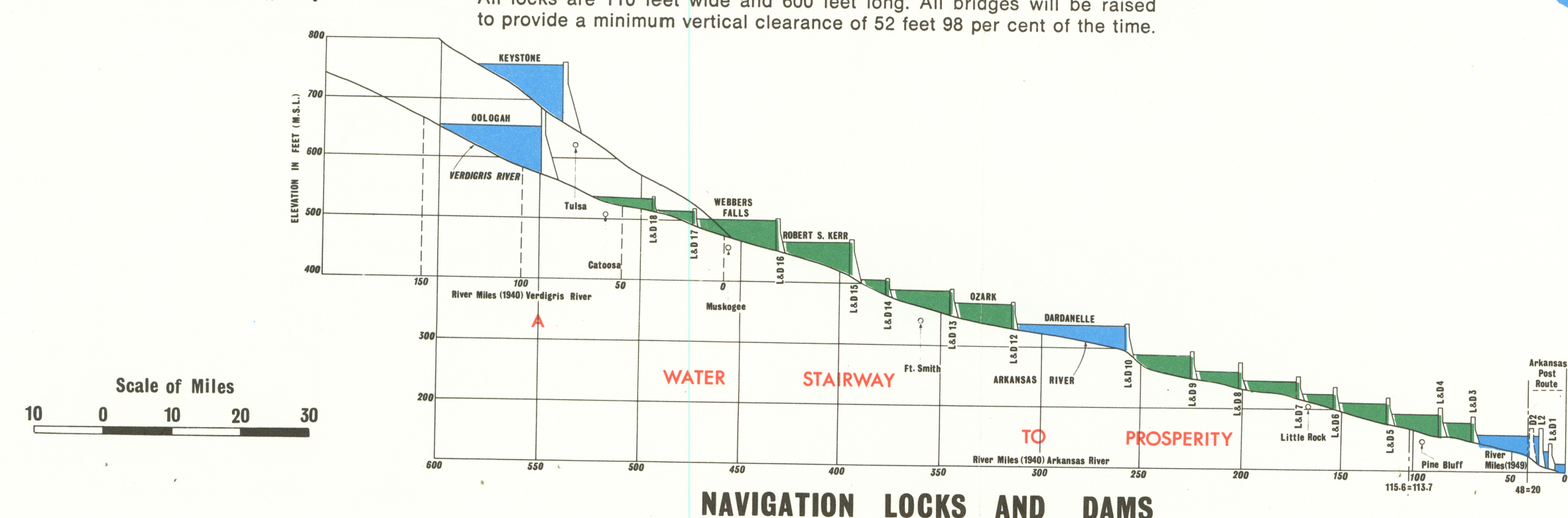
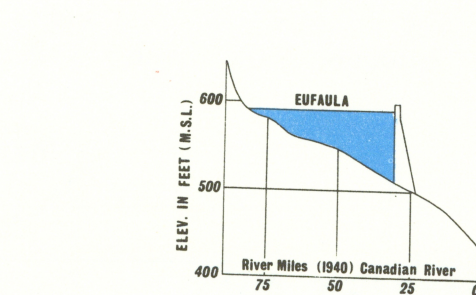
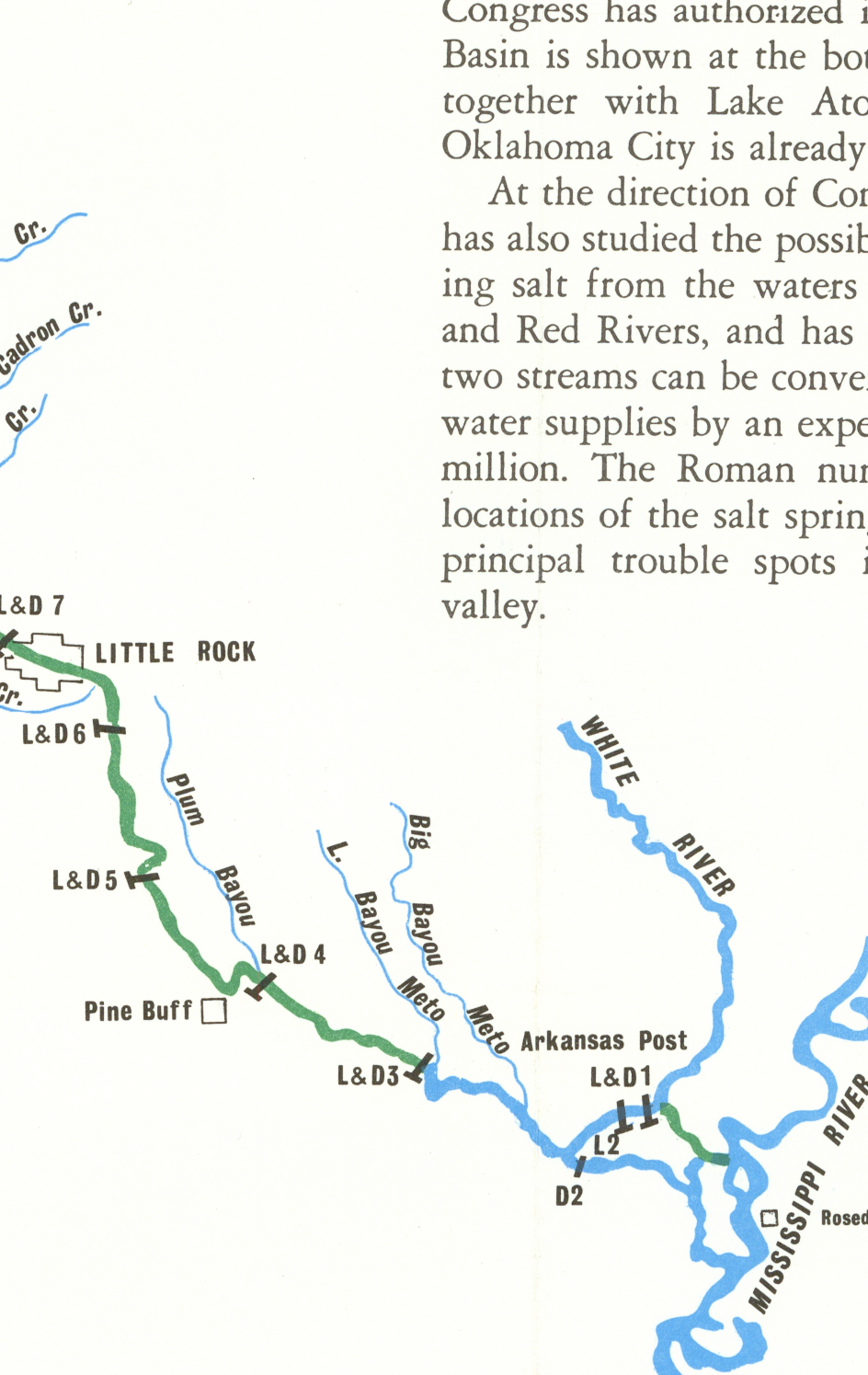
NAVIGATION LOCKS AND DAMS

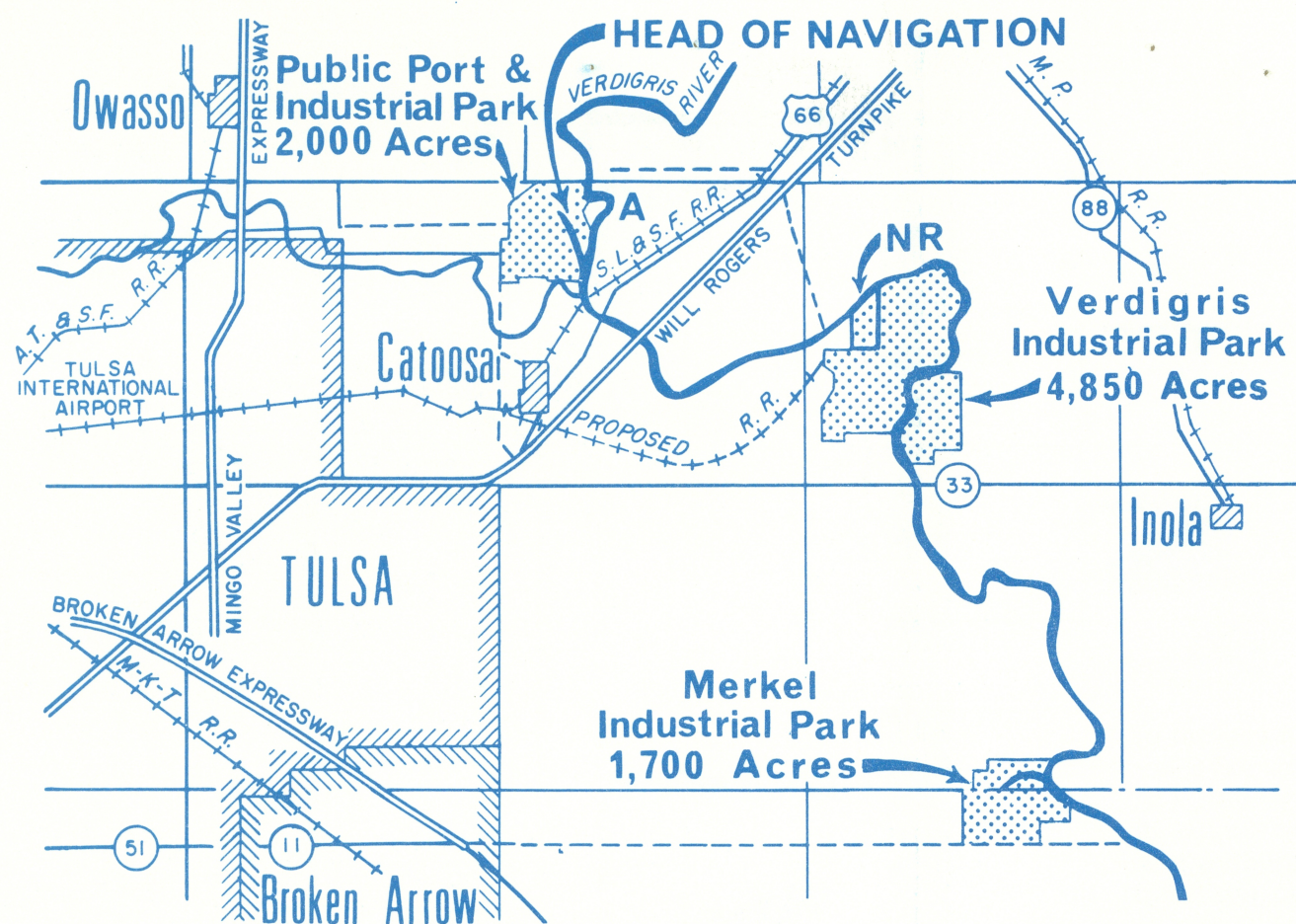
These are Nimrod and Blue Mountain, in Arkansas; Wister, Heyburn, Canton, Fort Supply (not shown), Great Salt Plains, and Hulah in Oklahoma; Elk City, Fall River, Toronto, John Redmond, Council Grove, and Marion in Kansas.

At the direction of Congress, the Corps has also studied the possibility of eliminating salt from the waters of the Arkansas and Red Rivers, and has found that these two streams can be converted into potable water supplies by an expenditure of \$270 million. The Roman numerals show the locations of the salt springs which are the principal trouble spots in the Arkansas valley.

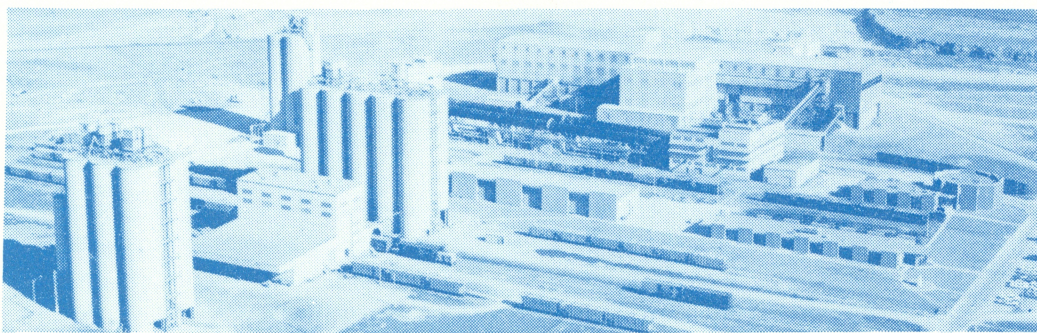
Along with Eufaula and Keystone, four high dams — Webbers Falls, Robert S. Kerr, Ozark and Dardanelle — in the 17-step water stairway soon will have hydroelectric power plants. Except for the State of Oklahoma projects at Pensacola and Markham Ferry, power from the hydroelectric plants is marketed by the Southwestern Power Administration, an agency of the U.S. Department of Interior.

Below the map is a chart which shows the lifts involved in the water stairway that makes navigation possible to Tulsa. The chart shows how approximately 100 feet of lift is eliminated by taking the channel up the Verdigris River to the vicinity of Catoosa instead of staying in the Arkansas River to Tulsa.





2. The City of Tulsa-Rogers County Port Authority is developing a \$20 million public port and industrial district at the head of navigation aimed at handling large movements of grain, petroleum, steel and many other bulk commodities. Armco Steel Corp. owns a plant site nearby (A). Downstream, adjoining the Verdigris Industrial Park, North American-Rockwell has a plant site (NR). Other public and private port developments can be found all along the river.



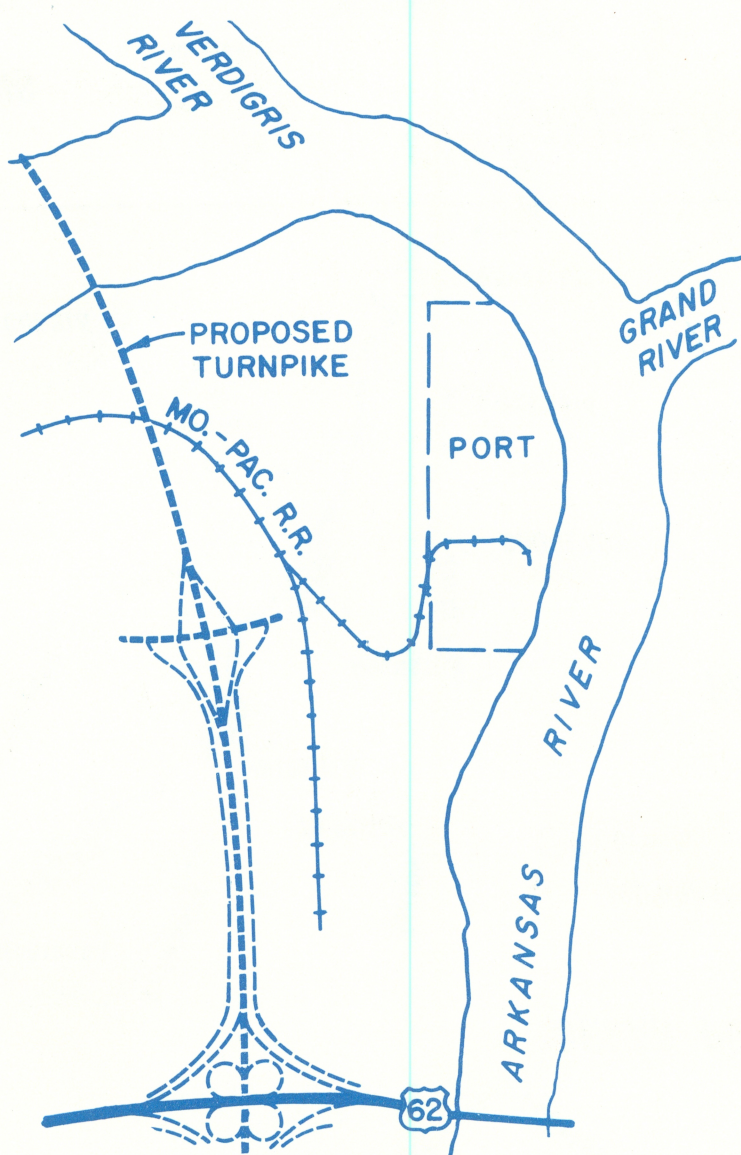
1. The \$18 million Martin-Marietta Corp. Dewey Portland cement plant was located east of Tulsa so that it could make use of barge transportation. Oklahoma Cement Co., which has furnished much of the cement for the navigation project, is one of several industries in the Grand River valley southeast of Pryor. The nearby Mid-America Industrial District has spent \$1.4 million preparing 5,000 acres for industrial development.

DISCOVER A NEW WORLD

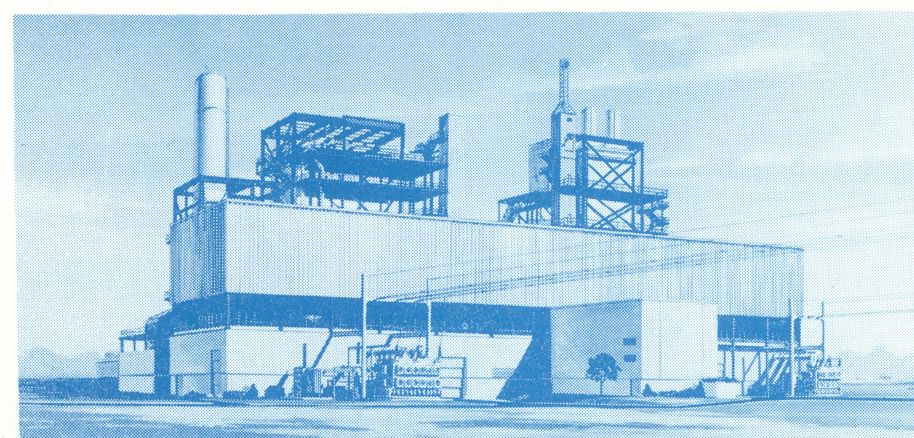
*In the Arkansas Basin
Where Water Resources
Have Been Put to Work*



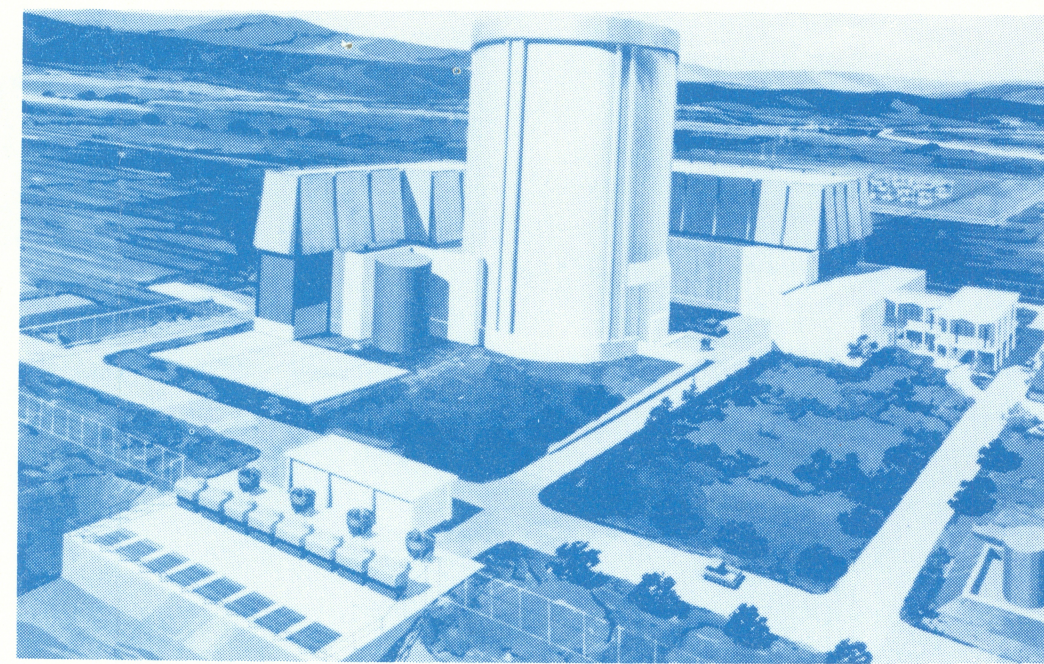
7. The Oklahoma Gas & Electric Co. Riverbank generating station at Muskogee uses recirculating cooling water from the Arkansas River.



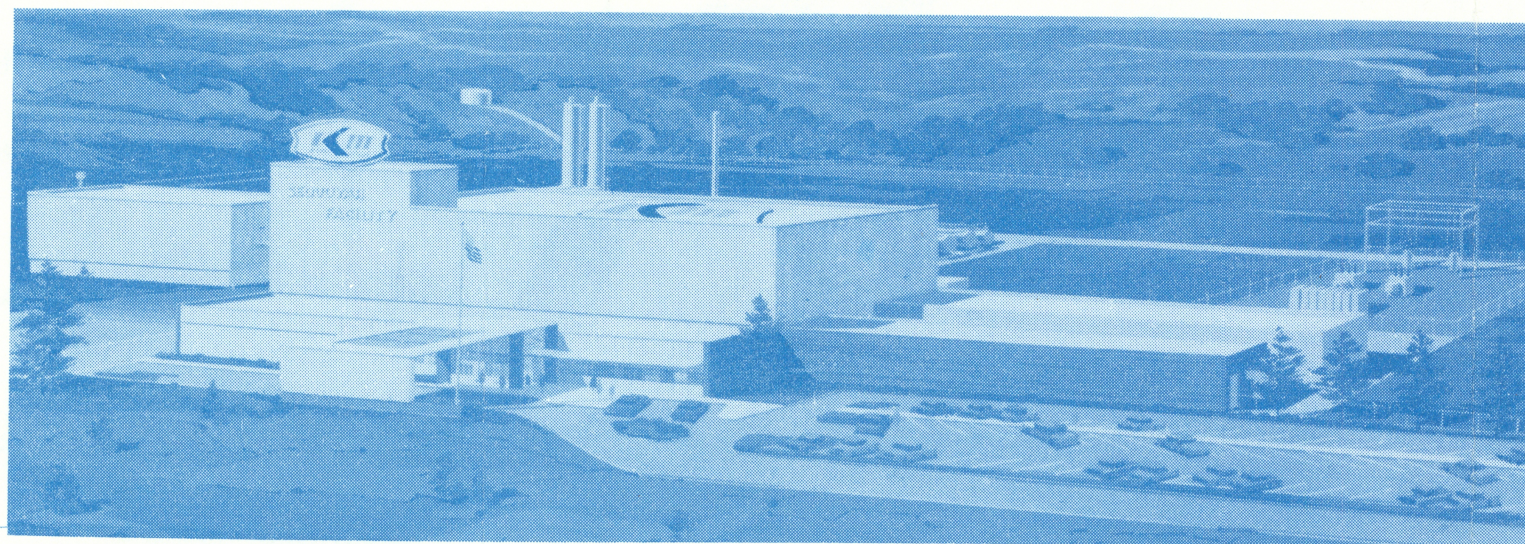
8. Muskogee's \$2 million public port will be served by a four-mile stretch of four-lane free-way connecting with toll roads to Tulsa and Webbers Falls. At Webbers Falls the toll project connects with Interstate 40 which follows the valley to Fort Smith, Van Buren and Little Rock, Ark. Phillips Petroleum Co. has a petro chemical plant site on the river south of U. S. 62 at Muskogee.



3. Public Service Co. of Okla. has started a \$30 million expansion of its Northeastern generating plant which uses Oologah Reservoir water for cooling. The present plant cost \$21 million.



5. Arkansas Power & Light Co. plans a \$140 million nuclear generating plant near Russellville, Ark., which will use Dardanelle Reservoir water for cooling.

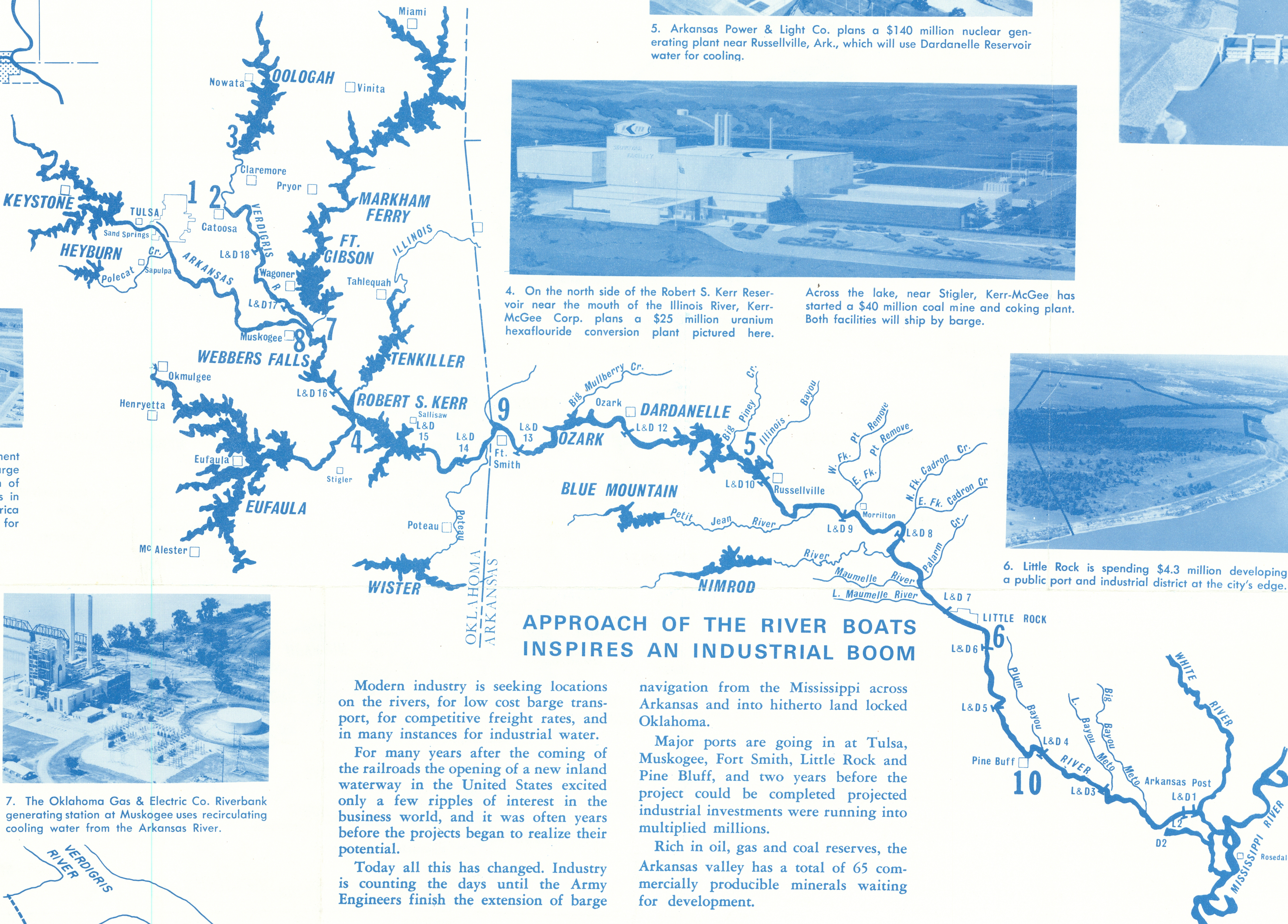


4. On the north side of the Robert S. Kerr Reservoir near the mouth of the Illinois River, Kerr-McGee Corp. plans a \$25 million uranium hexafluoride conversion plant pictured here.

Across the lake, near Stigler, Kerr-McGee has started a \$40 million coal mine and coking plant. Both facilities will ship by barge.



6. Little Rock is spending \$4.3 million developing a public port and industrial district at the city's edge.



APPROACH OF THE RIVER BOATS INSPIRES AN INDUSTRIAL BOOM

Modern industry is seeking locations on the rivers, for low cost barge transport, for competitive freight rates, and in many instances for industrial water.

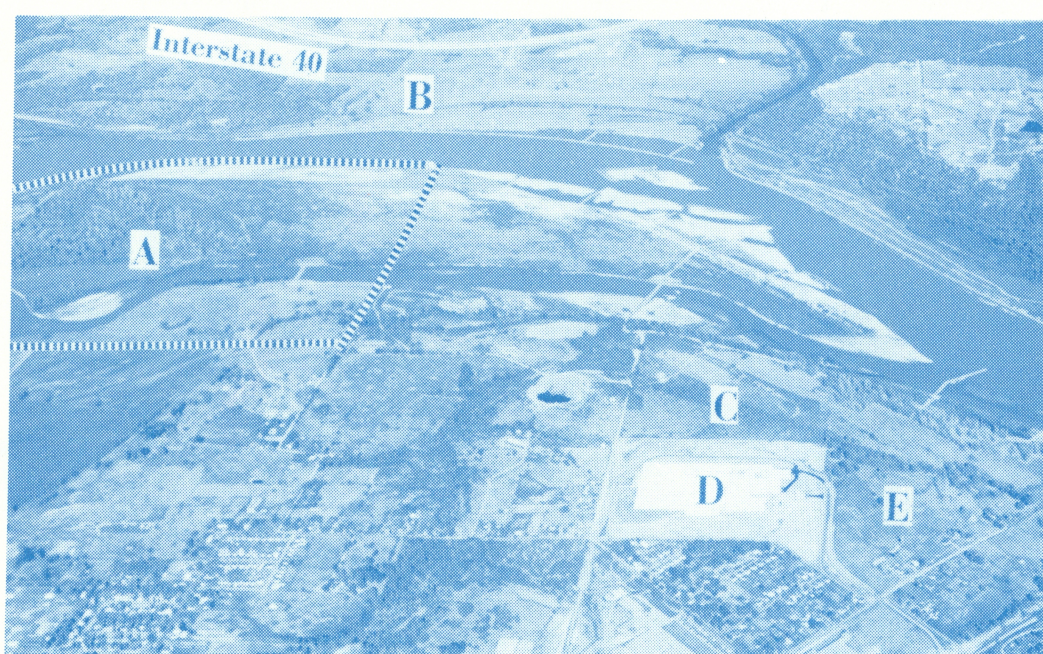
For many years after the coming of the railroads the opening of a new inland waterway in the United States excited only a few ripples of interest in the business world, and it was often years before the projects began to realize their potential.

Today all this has changed. Industry is counting the days until the Army Engineers finish the extension of barge

navigation from the Mississippi across Arkansas and into hitherto land locked Oklahoma.

Major ports are going in at Tulsa, Muskogee, Fort Smith, Little Rock and Pine Bluff, and two years before the project could be completed projected industrial investments were running into multiplied millions.

Rich in oil, gas and coal reserves, the Arkansas valley has a total of 65 commercially producible minerals waiting for development.



9. Fort Smith and Van Buren

A. Part of the 2,000-acre, \$4 million port and industrial park being developed at Fort Smith by Southern Enterprises, Inc., of Kansas City, Mo.

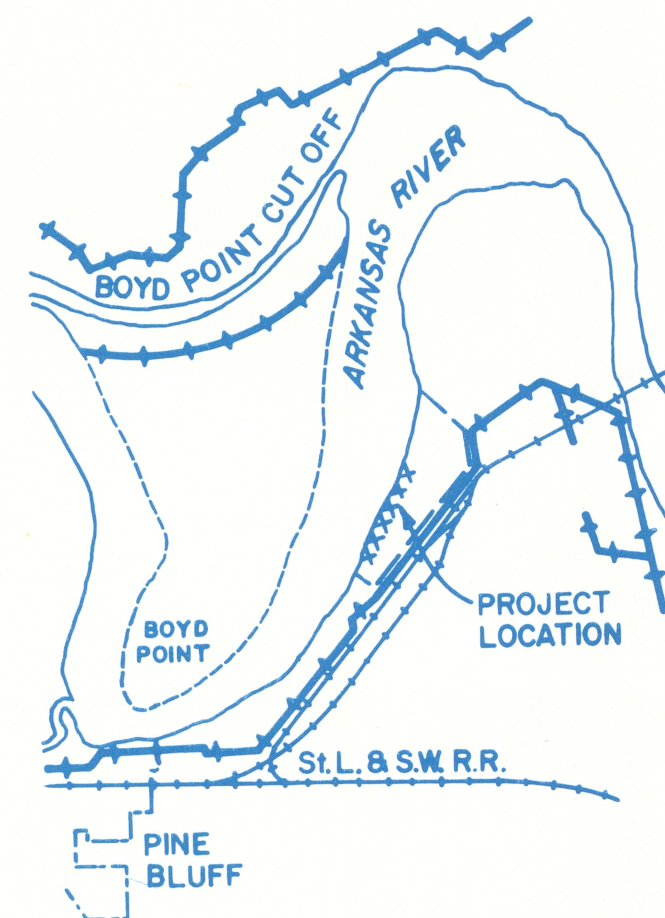
B. Site across the river selected by Pillsbury Milling Co., Minneapolis, Minn., for a \$1 million feed mill designed to become a unit in a poultry processing complex in the Van Buren area.

C. Location chosen by Owens Illinois Glass Co. for a \$5 million plant to make glass containers for the fruit and vegetable industry.

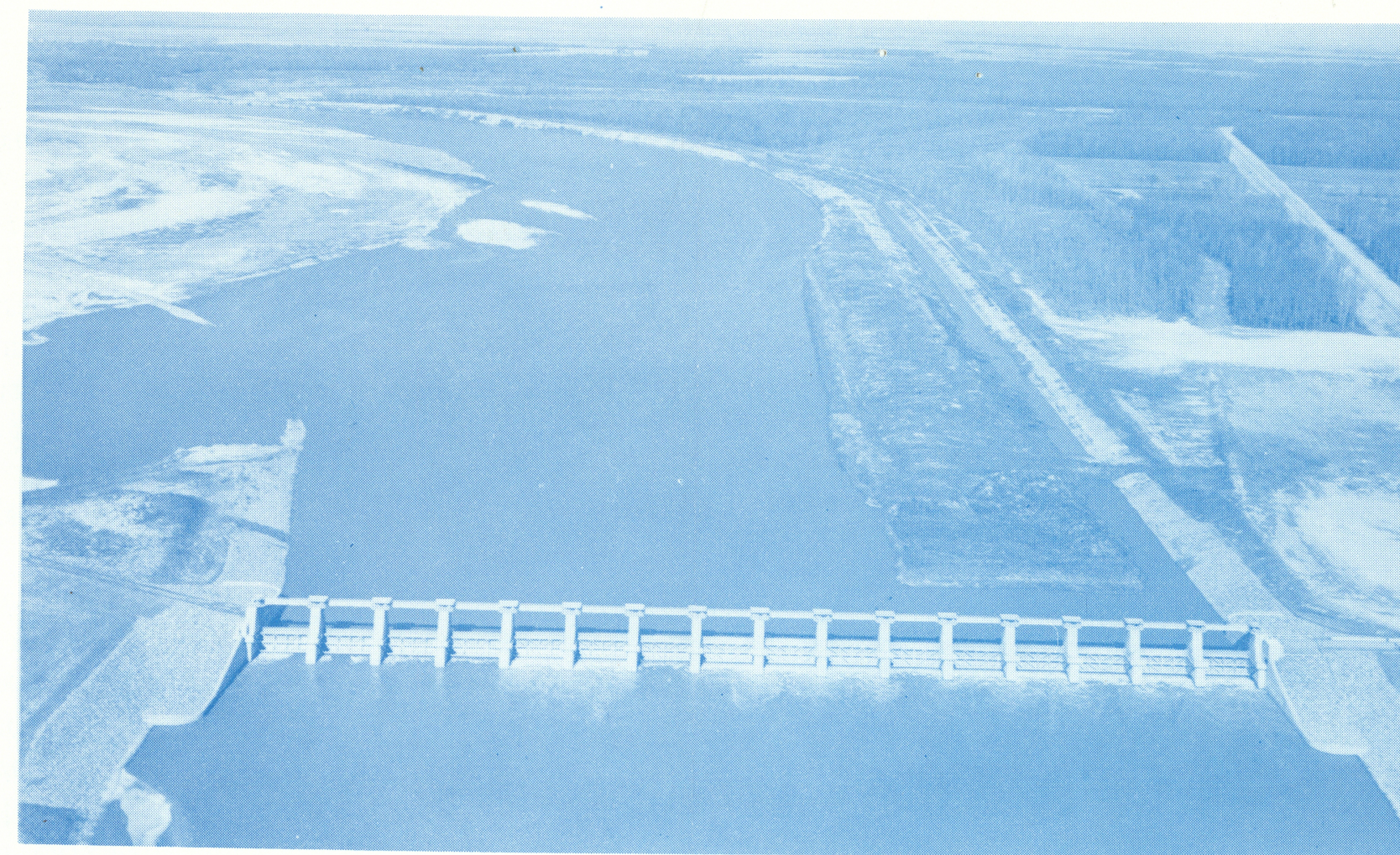
D. Gerber Food Co. plant.

E. Site picked by Arkansas Best Corp. for a truck terminal.

Across the state line south of Poteau, Okla., Howe Coal Co., a Fort Smith based firm, is developing a \$13 million mine to produce metallurgical coal for shipment to steel mills in Japan.



10. The Boyd Point cutoff has permitted Pine Bluff to establish a port on the old channel of the Arkansas River.



Dam No. 2 Creates First of Arkansas River Lakes



Lock No. 2 Three Miles Up the Canal



Lock and Dam No. 1 on the Arkansas Post Canal

For More Information Write or Call

ARKANSAS BASIN DEVELOPMENT ASSOCIATION, INC.,
Petroleum Building LU 3-1695 Tulsa, Oklahoma