

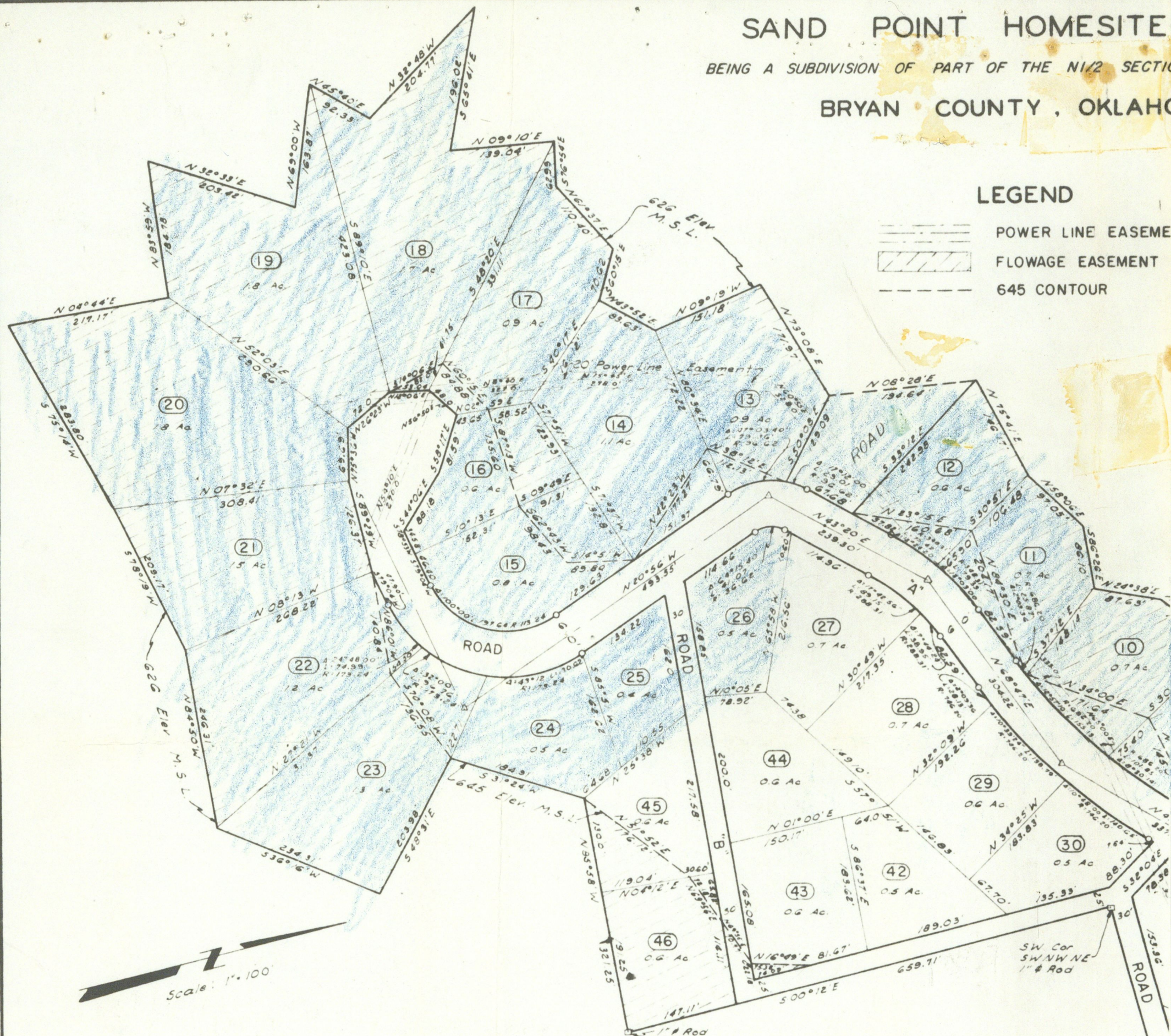
## SAND POINT HOMESITE

BEING A SUBDIVISION OF PART OF THE N1/2 SECTION

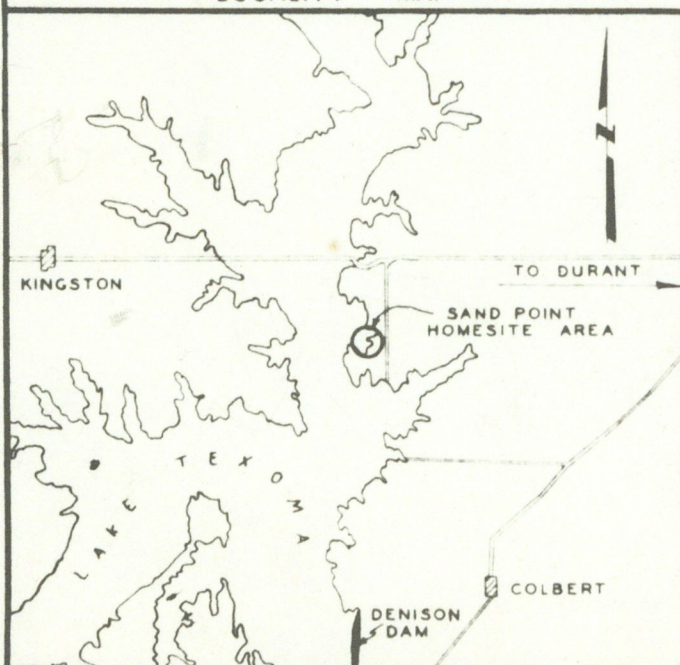
BRYAN COUNTY, OKLAHOMA

## LEGEND

- POWER LINE EASEMENT  
 FLOWAGE EASEMENT  
 645 CONTOUR



## LOCALITY MAP



## OWNER'S CERTIFICATE

I, THE UNDERSIGNED, JOHN D. BRISTOR, CERTIFY THAT PURSUANT TO THE ACT OF CONGRESS APPROVED 6 AUGUST 1956 (70 STAT. 1065) AND THE DELEGATIONS, RULES AND REGULATIONS PRESCRIBED BY THE SECRETARY OF THE ARMY PURSUANT THERETO, THE UNITED STATES OF AMERICA, RECORDED OWNER OF THE ABOVE DESCRIBED TRACT OF LAND, HAS CAUSED SAID SURVEY AND SUBDIVISION TO BE MADE DATED THIS 23 DAY OF JULY 1958.

John D. Bristor  
 JOHN D. BRISTOR  
 COLONEL, CE  
 DISTRICT ENGINEER  
 U. S. ARMY ENGINEER DISTRICT, TULSA

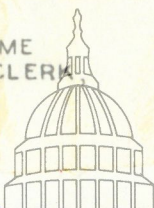
SUBSCRIBED AND SWORN TO BEFORE ME THIS 23 DAY OF July 1958.

Evellen L. Bristor  
 NOTARY PUBLIC

MY COMMISSION EXPIRES March 3, 1959

## NOTE

THIS PLAT FILED AS AN AMENDMENT TO THE ORIGINAL PLAT OF THE SAME SECTOR RECORDED IN BOOK 279, PAGE 638, IN THE OFFICE OF THE COUNTY CLERK BRYAN COUNTY, OKLAHOMA.



THE  
 CARL ALBERT  
 CENTER