

PARTIAL FIRST FLOOR PLAN SCALE:  $\frac{1}{8}'' = 1'-0''$

HOUSE OFFICE BUILDING ANNEX #2

SPACE DEVELOPMENT FOR THE HOUSE POST OFFICE

OFFICE OF THE ARCHITECT OF THE CAPITOL MAY 6 1975

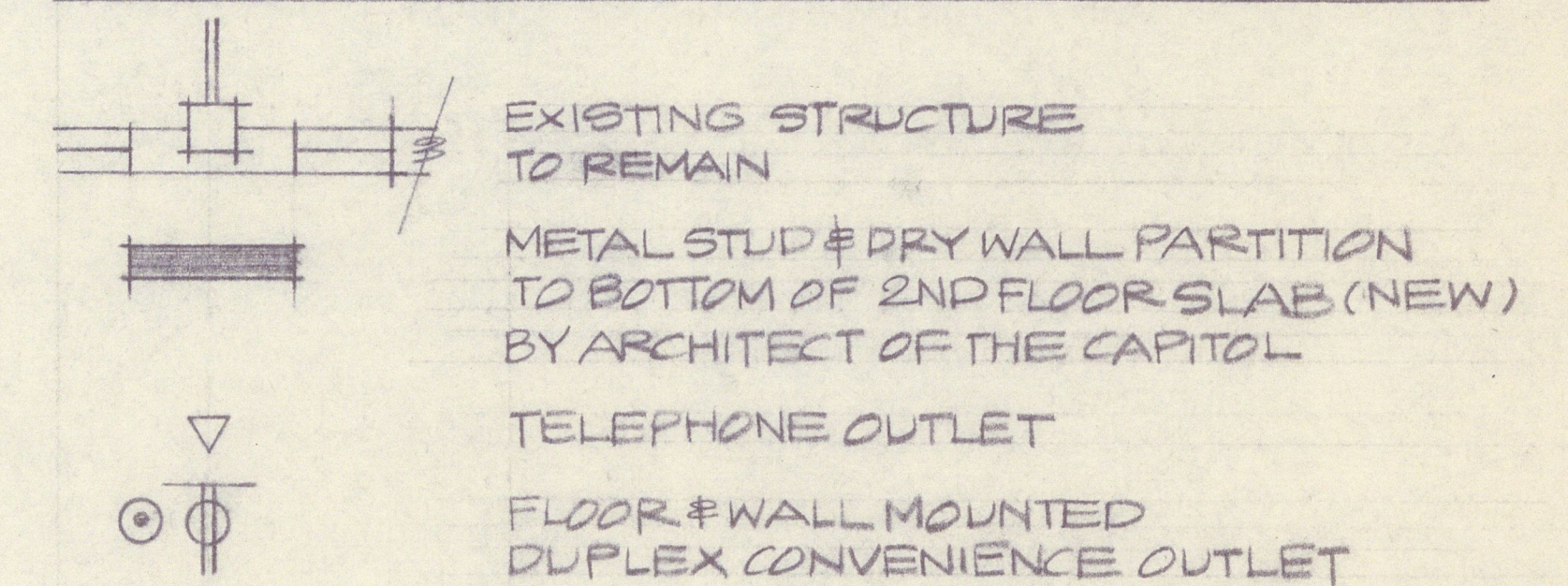
#### DISTRIBUTION

1. M.E.C. MAY 7, 1975  
 2. J.R.C. "  
 1. R.A.T. "  
 3. MR. BOYDSTON "

APPROVED BY MR. ROBERT V. ROTA'S MAY 13, 1975 LETTER

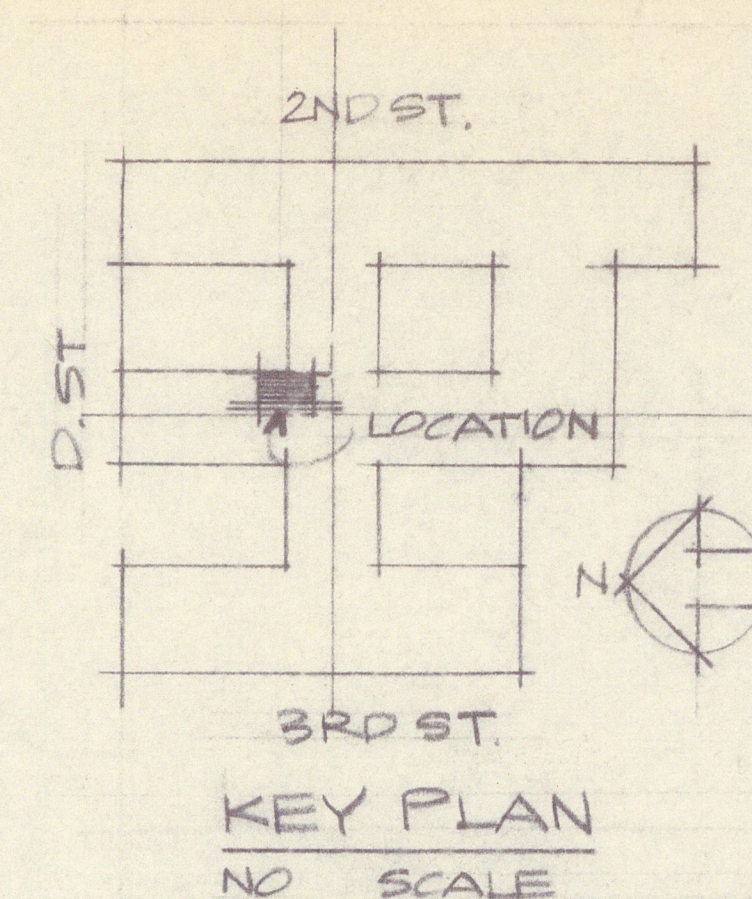
1 CLERK OF HOUSE MAY 15, 1975  
 1 MR. MIKE REED MAY 15, 1975

#### LEGEND OF WORK BY ARCHITECT OF CAPITOL



#### NOTE

1. ADDITIONAL LIGHT FIXTURES SHALL BE ADDED.
2. THE SPACES SHALL BE AIR CONDITIONED.
3. ALL FURNITURE AND MOVABLE ITEMS SHALL BE FURNISHED BY THE CLERK OF THE HOUSE.
4. TELEPHONES SHALL BE FURNISHED AND INSTALLED BY THE C & P. TELEPHONE COMPANY. THE TENANT SHALL OBTAIN PRIOR APPROVAL FROM THE HOUSE ADMINISTRATION COMMITTEE.



KEY PLAN  
NO SCALE