

*This is it  
New American  
G. Sessions*

*Get the kind this type. Its needed in more  
ways than I can tell you. I used to teach at  
Muldrow, Sautters.*

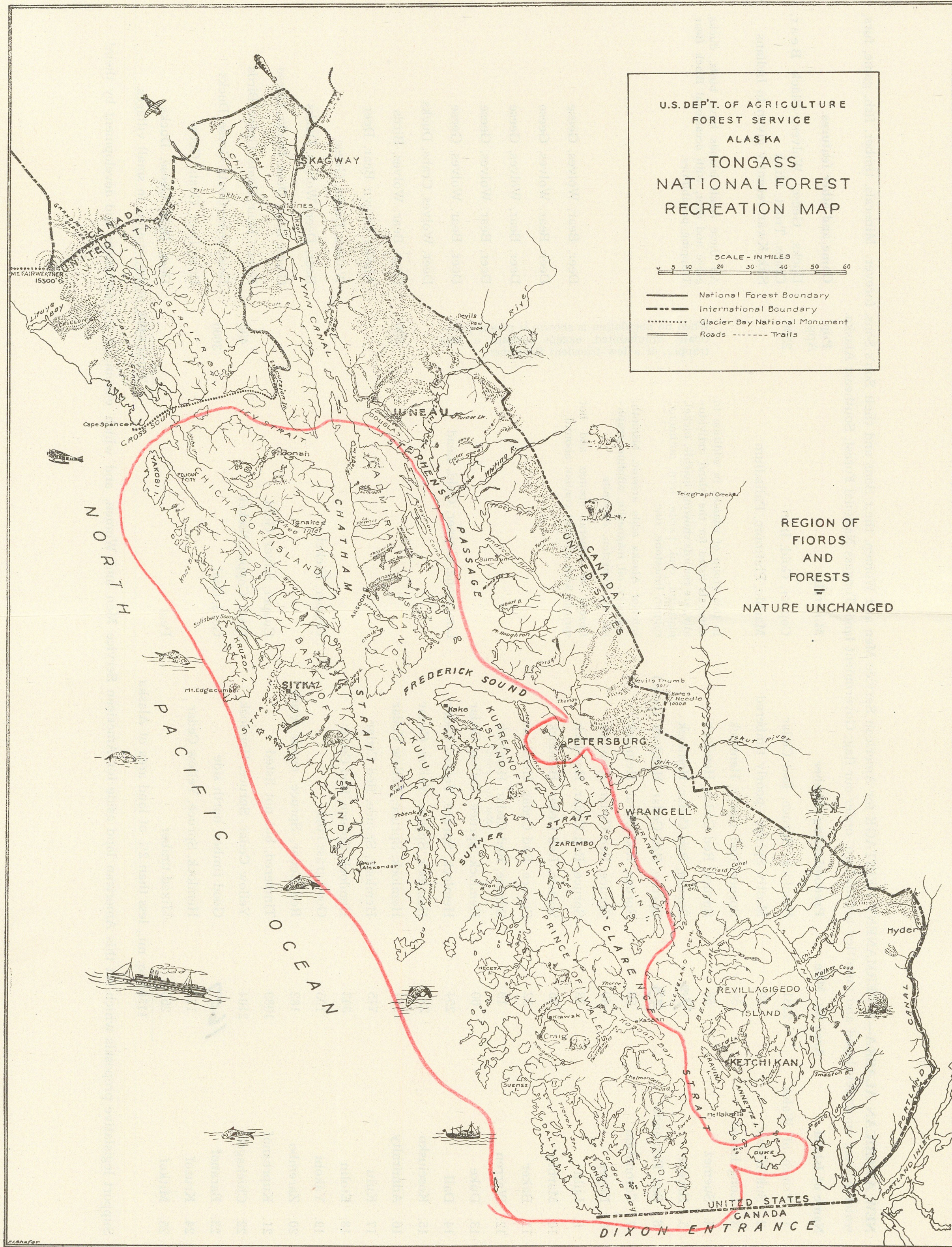


**NEW AMERICAN ALASKA**—A PERMANENT HERITAGE for American Service Men and Women, their Sons and their Son's Sons, forever. Minerals, timber, fish, game, furs, water power; an undeveloped and unsettled archipelago, under our flag; Government land, Tongass National Forest, Southeast Alaska.

Name of Island	Area Sq. Mile	Predominating Timber	Minerals	Pop. App.	Game and other features
1. Prince of Wales	2231	Hemlock, Spruce, Red Cedar	Copper, Gold, Iron	2500	Ducks, Geese, Wolves, Black Bear, Crabs, Trout, Mink Suk Kwan recently given to Indians
2. Suk Kwan	69	Mostly Spruce—poorly timbered	Marble, Platinum, Palladium		
3. Long Island	55	Spruce, Red Cedar, Hemlock			
4. Suemez	58	Spruce, Red Cedar, Hemlock	In this group of islands, in addition to minerals listed for the island individually, are records showing marble, nickel, platinum, coal, barite, iron, antimony, copper, limestone, zinc.		All these small islands have birds, ducks, geese and deer, with occasional Black Bear. Trapping possibilities.
5. Haceta		Spruce, Red Cedar, Hemlock			
6. San Fernando		Spruce, Red Cedar, Hemlock (poor)			
7. Coronation	50	Spruce, Red Cedar, Hemlock	Interior Alaska adds arsenic, bismuth, mercury, oil, magnesite, sulphur, graphite, tin, tungsten, chromite.		
8. Noyes	49	Spruce, Red Cedar, Hemlock			
9. Lulu	23	Spruce, Red Cedar, Hemlock	Dozens of mineral springs and hot springs with mineral content abound.		Deer, Bear, Wolves, Geese
10. Marble	25	Spruce, Red Cedar, Hemlock			Deer, Bear, Wolves, Geese
11. Baker	52	Spruce, Red Cedar, Hemlock			Deer, Bear, Wolves, Geese
12. Warren	19	Spruce, Red Cedar, Hemlock (Not too good.)			Deer, Bear, Wolves, Geese
13. Duke	60	Hemlock, Spruce, Yellow Cedar			Deer, Bear, Wolves, Geese
14. Dall	254	Hemlock, Spruce, Yellow Cedar	Limestone, Copper, Gold, Lead		Deer, Bear, Wolves, Geese
15. Kosciusko	250	Hemlock, Spruce, Yellow Cedar			Deer, Wolves, Crabs, Ducks
16. Admiralty	1664	Hemlock, Spruce, Yellow Cedar		500	Deer, Bear, Wolves, Birds
17. Kuiu	745	Hemlock, Spruce, Red Cedar			Alaska Brown Bear, Deer
18. Etolin	343	Hemlock, Spruce, Red Cedar			Wolves, Ducks, Geese
19. Yakobi	105	Good grass land	Copper, Nickel		Bear, Deer, Wolves, Ducks
20. Zarembo	182	Red Cedar, Spruce, much scrub			Goats, Bear, Deer, Ducks, Geese
21. Kupreanof	1089	Timbered, but not listed	Copper, Silver, Gold		Brown Bear, Goats, Geese, Birds
22. Chichagof	2104	Yellow Cedar, Spruce, Hemlock	Gold, Copper, Nickel	400	Bear, Deer, Goats, Geese, Ducks
23. Baranof		Good timber, north side	Gold, Coal	3000	Bear, Deer, Goats, Geese
24. Kruzof	172	Hemlock, Spruce, Yellow Cedar			Deer, Bear, Geese, Ducks
25. Mitkof	250	Mixed timber	Peat		
11560 sq. mi., less than 2% of land area of Alaska		Total 6400, mostly native, in small villages.			

Support legislative proposals which set this American land aside for American Service Men and Women, and which encourage its settlement and development by them!







**NEW AMERICAN ALASKA**—A PERMANENT HERITAGE for American Service Men and Women, their Sons and their Son's Sons, forever. Minerals, timber, fish, game, furs, water power; an undeveloped and unsettled archipelago, under our flag; Government land, Tongass National Forest, Southeast Alaska.

Name of Island	Area Sq. Mile	Predominating Timber	Minerals	Pop. App.	Game and other features
1. Prince of Wales	2231	Hemlock, Spruce, Red Cedar	Copper, Gold, Iron	2500	Ducks, Geese, Wolves, Black Bear, Crabs, Trout, Mink Suk Kwan recently given to Indians
2. Suk Kwan	69	Mostly Spruce—poorly timbered	Marble, Platinum, Palladium		
3. Long Island	55	Spruce, Red Cedar, Hemlock			
4. Suemez	58	Spruce, Red Cedar, Hemlock			
5. Haceta	72	Spruce, Red Cedar, Hemlock			
6. San Fernando	33	Spruce, Red Cedar, Hemlock (poor)			
7. Coronation	50	Spruce, Red Cedar, Hemlock			
8. Noyes	49	Spruce, Red Cedar, Hemlock			
9. Lulu	23	Spruce, Red Cedar, Hemlock			
10. Marble	25	Spruce, Red Cedar, Hemlock			
11. Baker	52	Spruce, Red Cedar, Hemlock			
12. Warren	19	Spruce, Red Cedar, Hemlock (Not too good.)			
13. Duke	60	Hemlock, Spruce, Yellow Cedar			
14. Dall	254	Hemlock, Spruce, Yellow Cedar			
15. Kosciusko	250	Hemlock, Spruce, Yellow Cedar			
16. Admiralty	1664	Hemlock, Spruce, Yellow Cedar			
17. Kuiu	745	Hemlock, Spruce, Red Cedar			
18. Etolin	343	Hemlock, Spruce, Red Cedar			
19. Yakobi	105	Good grass land			
20. Zarembo	182	Red Cedar, Spruce, much scrub			
21. Kupreanof	1089	Timbered, but not listed			
22. Chichagof	2104	Yellow Cedar, Spruce, Hemlock			
23. Baranof	1607	Good timber, north side			
24. Kruzof	172	Hemlock, Spruce, Yellow Cedar			
25. Mitkof	250	Mixed timber			
11560 sq. mi., less than 2% of land area of Alaska					

In this group of islands, in addition to minerals listed for the island individually, are records showing marble, nickel, platinum, coal, barite, iron, antimony, copper, limestone, zinc.

Interior Alaska adds arsenic, bismuth, mercury, oil, magnesite, sulphur, graphite, tin, tungsten, chromite.

Dozens of mineral springs and hot springs with mineral content abound.

Limestone, Copper, Gold, Lead

Copper, Nickel

Copper, Silver, Gold

Gold, Copper, Nickel

Gold, Coal

Peat

Pop. App.

When no population is shown, it means practically uninhabited, except perhaps a lone trapper, or a few transient fishermen.

500

400

3000

Total 6490, mostly native, in small villages.

All these small islands have birds, ducks, geese and deer, with occasional Black Bear. Trapping possibilities.

Deer, Bear, Wolves, Geese

Deer, Bear, Wolves, Geese

Deer, Bear, Wolves, Geese

Deer, Bear, Wolves, Geese

Deer, Bear, Wolves, Geese

Deer, Wolves, Crabs, Ducks

Deer, Bear, Wolves, Birds

Alaska Brown Bear, Deer

Wolves, Ducks, Geese

Bear, Deer, Wolves, Ducks

Goats, Bear, Deer, Ducks, Geese

Brown Bear, Goats, Geese, Birds

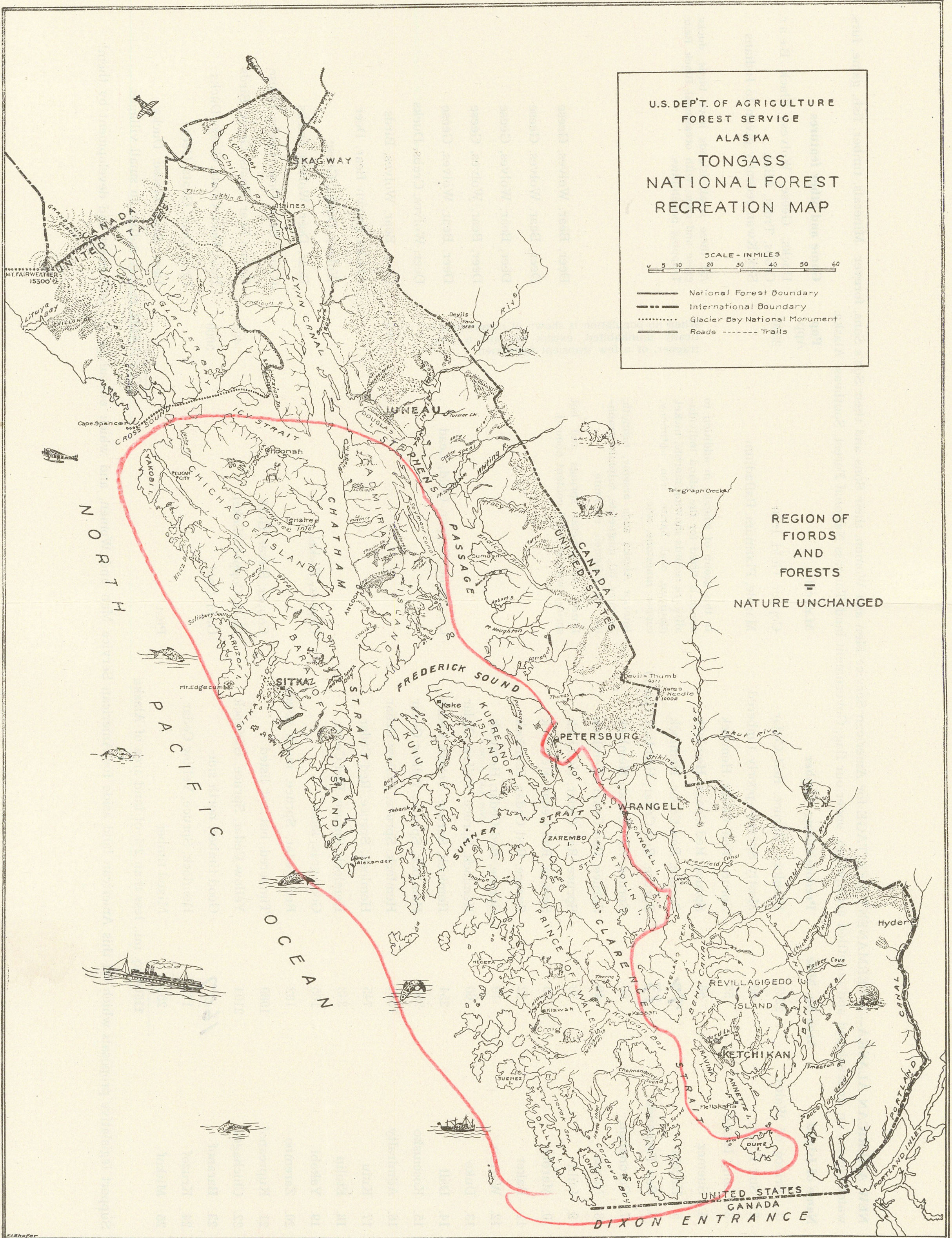
Bear, Deer, Goats, Geese, Ducks

Bear, Deer, Goats, Geese

Deer, Bear, Geese, Ducks

Support legislative proposals which set this American land aside for American Service Men and Women, and which encourage its settlement and development by them!





U.S. DEPT. OF AGRICULTURE  
FOREST SERVICE  
ALASKA  
TONGASS  
NATIONAL FOREST  
RECREATION MAP

SCALE - IN MILES  
0 5 10 20 30 40 50 60

- National Forest Boundary
- - - International Boundary
- ..... Glacier Bay National Monument
- == Roads - - - - Trails

REGION OF  
FIORDS  
AND  
FORESTS  
=  
NATURE UNCHANGED



**NEW AMERICAN ALASKA**—A PERMANENT HERITAGE for American Service Men and Women, their Sons and their Son's Sons, forever. Minerals, timber, fish, game, furs, water power; an undeveloped and unsettled archipelago, under our flag; Government land, Tongass National Forest, Southeast Alaska.

Name of Island	Area Sq. Mile	Predominating Timber	Minerals	Pop. App.	Game and other features
1. Prince of Wales	2231	Hemlock, Spruce, Red Cedar	Copper, Gold, Iron	2500	Ducks, Geese, Wolves, Black Bear, Crabs, Trout, Mink
2. Suk Kwan	69	Mostly Spruce—poorly timbered	Marble, Platinum, Palladium		Suk Kwan recently given to Indians
3. Long Island	55	Spruce, Red Cedar, Hemlock	In this group of islands, in addition to minerals listed for the island individually, are records showing marble, nickel, platinum, coal, barite, iron, antimony, copper, limestone, zinc.	When no population is shown, it means practically uninhabited, except perhaps a lone trapper, or a few transient fishermen.	All these small islands have birds, ducks, geese and deer, with occasional Black Bear. Trapping possibilities.
4. Suemez	58	Spruce, Red Cedar, Hemlock			
5. Haceta	72	Spruce, Red Cedar, Hemlock			
6. San Fernando	33	Spruce, Red Cedar, Hemlock (poor)			
7. Coronation	50	Spruce, Red Cedar, Hemlock			
8. Noyes	49	Spruce, Red Cedar, Hemlock	Interior Alaska adds arsenic, bismuth, mercury, oil, magnesite, sulphur, graphite, tin, tungsten, chromite.		
9. Lulu	23	Spruce, Red Cedar, Hemlock	Dozens of mineral springs and hot springs with mineral content abound.		Deer, Bear, Wolves, Geese
10. Marble	25	Spruce, Red Cedar, Hemlock			Deer, Bear, Wolves, Geese
11. Baker	52	Spruce, Red Cedar, Hemlock			Deer, Bear, Wolves, Geese
12. Warren	19	Spruce, Red Cedar, Hemlock (Not too good.)			Deer, Bear, Wolves, Geese
13. Duke	60	Hemlock, Spruce, Yellow Cedar			Deer, Bear, Wolves, Geese
14. Dall	254	Hemlock, Spruce, Yellow Cedar	Limestone, Copper, Gold, Lead		Deer, Bear, Wolves, Geese
15. Kosciusko	250	Hemlock, Spruce, Yellow Cedar			Deer, Wolves, Crabs, Ducks
16. Admiralty	1664	Hemlock, Spruce, Yellow Cedar		500	Deer, Bear, Wolves, Birds
17. Kuiu	745	Hemlock, Spruce, Red Cedar			Alaska Brown Bear, Deer
18. Etolin	343	Hemlock, Spruce, Red Cedar			Wolves, Ducks, Geese
19. Yakobi	105	Good grass land	Copper, Nickel		Bear, Deer, Wolves, Ducks
20. Zarembo	182	Red Cedar, Spruce, much scrub			Goats, Bear, Deer, Ducks, Geese
21. Kupreanof	1089	Timbered, but not listed	Copper, Silver, Gold		Brown Bear, Goats, Geese, Birds
22. Chichagof	2104	Yellow Cedar, Spruce, Hemlock	Gold, Copper, Nickel	400	Bear, Deer, Goats, Geese, Ducks
23. Baranof	1607	Good timber, north side	Gold, Coal	3000	Bear, Deer, Goats, Geese
24. Kruzof	172	Hemlock, Spruce, Yellow Cedar			Deer, Bear, Geese, Ducks
25. Mitkof	250	Mixed timber	Peat		
11560 sq. mi., less than 2% of land area of Alaska		Total 6400, mostly native, in small villages.			

Support legislative proposals which set this American land aside for American Service Men and Women, and which encourage its settlement and development by them!







**NEW AMERICAN ALASKA**—A PERMANENT HERITAGE for American Service Men and Women, their Sons and their Son's Sons, forever. Minerals, timber, fish, game, furs, water power; an undeveloped and unsettled archipelago, under our flag; Government land, Tongass National Forest, Southeast Alaska.

Name of Island	Area Sq. Mile	Predominating Timber	Minerals	Pop. App.	Game and other features
1. Prince of Wales	2231	Hemlock, Spruce, Red Cedar	Copper, Gold, Iron	2500	Ducks, Geese, Wolves, Black Bear, Crabs, Trout, Mink Suk Kwan recently given to Indians
2. Suk Kwan	69	Mostly Spruce—poorly timbered	Marble, Platinum, Palladium		
3. Long Island	55	Spruce, Red Cedar, Hemlock			
4. Suemez	58	Spruce, Red Cedar, Hemlock			
5. Haceta	72	Spruce, Red Cedar, Hemlock			
6. San Fernando	33	Spruce, Red Cedar, Hemlock (poor)			
7. Coronation	50	Spruce, Red Cedar, Hemlock			
8. Noyes	49	Spruce, Red Cedar, Hemlock			
9. Lulu	23	Spruce, Red Cedar, Hemlock			
10. Marble	25	Spruce, Red Cedar, Hemlock			
11. Baker	52	Spruce, Red Cedar, Hemlock			
12. Warren	19	Spruce, Red Cedar, Hemlock (Not too good.)			
13. Duke	60	Hemlock, Spruce, Yellow Cedar			
14. Dall	254	Hemlock, Spruce, Yellow Cedar			
15. Kosciusko	250	Hemlock, Spruce, Yellow Cedar			
16. Admiralty	1664	Hemlock, Spruce, Yellow Cedar			
17. Kuiu	745	Hemlock, Spruce, Red Cedar			
18. Etolin	343	Hemlock, Spruce, Red Cedar			
19. Yakobi	105	Good grass land			
20. Zarembo	182	Red Cedar, Spruce, much scrub			
21. Kupreanof	1089	Timbered, but not listed			
22. Chichagof	2104	Yellow Cedar, Spruce, Hemlock			
23. Baranof	1607	Good timber, north side			
24. Kruzof	172	Hemlock, Spruce, Yellow Cedar			
25. Mitkof	250	Mixed timber			
11560 sq. mi., less than 2% of land area of Alaska					

#### Minerals

Copper, Gold, Iron

Marble, Platinum, Palladium

In this group of islands, in addition to minerals listed for the island individually, are records showing marble, nickel, platinum, coal, barite, iron, antimony, copper, limestone, zinc.

Interior Alaska adds arsenic, bismuth, mercury, oil, magnesite, sulphur, graphite, tin, tungsten, chromite.

Dozens of mineral springs and hot springs with mineral content abound.

Limestone, Copper, Gold, Lead

Copper, Nickel

Copper, Silver, Gold

Gold, Copper, Nickel

Gold, Coal

Peat

#### Pop. App.

2500

When no population is shown, it means practically uninhabited, except perhaps a lone trapper, or a few transient fishermen.

500

400

3000

Total 6400, mostly native, in small villages.

#### Game and other features

Ducks, Geese, Wolves, Black Bear, Crabs, Trout, Mink  
Suk Kwan recently given to Indians

All these small islands have birds, ducks, geese and deer, with occasional Black Bear. Trapping possibilities.

Deer, Bear, Wolves, Geese

Deer, Bear, Wolves, Geese

Deer, Bear, Wolves, Geese

Deer, Bear, Wolves, Geese

Deer, Bear, Wolves, Geese

Deer, Wolves, Crabs, Ducks

Deer, Bear, Wolves, Birds

Alaska Brown Bear, Deer

Wolves, Ducks, Geese

Bear, Deer, Wolves, Ducks

Goats, Bear, Deer, Ducks, Geese

Brown Bear, Goats, Geese, Birds

Bear, Deer, Goats, Geese, Ducks

Bear, Deer, Goats, Geese

Deer, Bear, Geese, Ducks

Support legislative proposals which set this American land aside for American Service Men and Women, and which encourage its settlement and development by them!